

TATA STEEL

#WeAlsoMakeTomorrow



**PORTABLE & SCALABLE
MODULAR CONSTRUCTION
SOLUTIONS**



ABOUT NEST-IN

The demand for infrastructure in India is rapidly evolving with the changing times and developmental needs. Tata Steel Nest-In is fulfilling these needs through its range of steel-based modular and prefabricated construction solutions.

Nest-In's innovative and sustainable construction solutions help in creating a variety of shelters for a diverse range of requirements. The innovative prefabricated construction technology makes the process smarter, faster, more efficient, and therefore scalable. It also enhances the availability of shelters across regions and populations due to its ease and convenience.

Nest-In provides complete turnkey solutions for housing, offices, hospitals, educational institutions, industrial amenities, sanitation, portable cabins and premium living pan India.

Built with the timeless values and long-standing trust of Tata Steel, Nest-In solutions hold the promise for a better tomorrow.





ABOUT MOBINEST

Portable Cabins

MobiNest is a range of portable cabins from the house of Nest-In, which comes in customisable sizes and are designed to meet the fast-paced needs of the modern world. The cabins are portable, easy to install, and can be relocated.

MobiNest is most commonly used at offsite workspaces for manufacturing, mining and construction companies, and can also serve as an effective housing and sanitation solution. During the Covid-19 pandemic, MobiNest cabins were adapted as effective quarantine and isolation cabins to combat the outbreak.

The core structure is constructed from high-strength steel of various grades depending upon the specific requirements and is provided with composite insulation panels to offer durable facets. MobiNest units also offer flexibility in terms of design and speed of installation.



EXPERIENCE THE MOBINEST ADVANTAGE



Versatile

Can be used as offices, residences, classrooms & more



Customizable

With multiple finish, colours, layouts options with thermal & acoustic insulation



Top Notch Quality

In house strict quality checks & third-party certifications ensured



Durable & Maintenance Free

Made with superior quality steel



Premium Offering

With branded interior fittings & furnishings



Easily Transportable

Can be quickly relocated across sites

VAST RANGE OF APPLICATIONS OF MOBINEST



01

Coworking space



02

Working Pods



03

Creche



04

Yoga Room,
Recreational Room



05

Restaurants, Cafes,
Canteen, Mess,
Kitchen



06

Retail Kiosk



07

Pet Homes



08

Storage Containers



WALL SPECIFICATIONS

FABRICATED FROM 1.2 MM
THICKNESS CORRUGATED PLATE
DULY WELDED

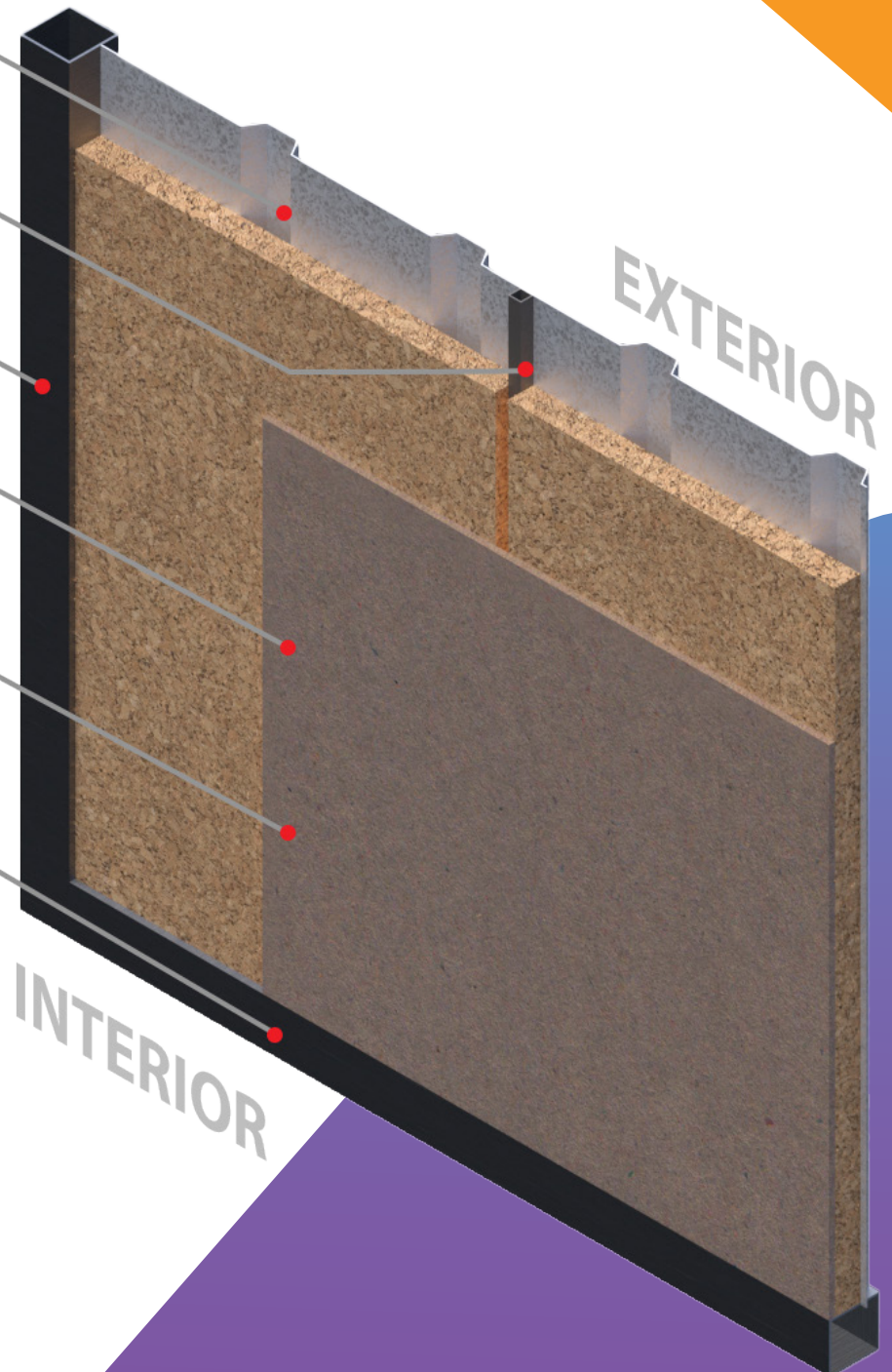
25MM X 25MM 1.6MM
TUBULAR SECTION

VERTICAL - M.S BOX PIPE OF
100 X 100 MM X 4MM YST 355

50 MM THICK ROCKWOOL
WITH 48KG/CUM DENSITY

12 MM THICKNESS BOTH SIDE
LAMINATE MDF BOARD

BOTTOM PERIPHERY - M.S
BOX PIPE OF 100MM X
100MM X 4MM YST 355



FLOOR SPECIFICATIONS



INSIDE MOBINEST

MobiNest cabins are well insulated and prefabricated to ensure speediest installation. High quality interior planning and furnishing make these cabins a convenient and comfortable environment even in the toughest locations.



Offices



Conference Rooms



Security Cabins



Bunk Houses



Quarantine Cabin



ICU Cabin

MOBINEST SUCCESS STORIES

BIJAPUR COVID-19 CENTRE



24,000 Sq. Ft.



93 Beds



120 Days



TS MEDICA COVID-19 HOSPITAL



27,000 Sq. Ft.



156 Beds



240 Days



FIGHTING THE COVID-19 PANDEMIC AT KASARAGOD



80,000 Sq. Ft.



551 Beds



90 Days





PSA, MEGHALAYA



1,779 Sq. Ft.



42 Beds



135 Days





PSA, ASSAM



2,285 Sq. Ft.



54 Beds



195 Days



PSA, FARIDABAD COVID-19 HOSPITAL



12,500 Sq. Ft.



96 Beds



90 Days



CAFES





CANTEENS





RESORTS

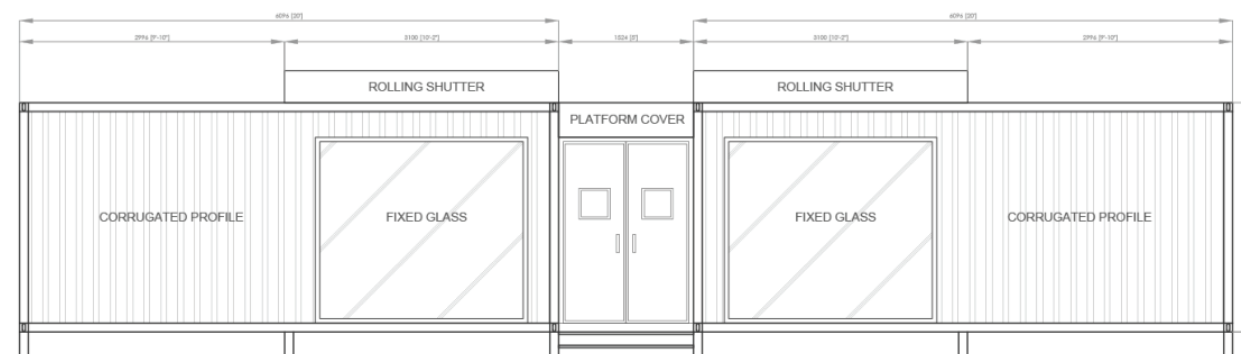


G+1 CONTAINER HOMES



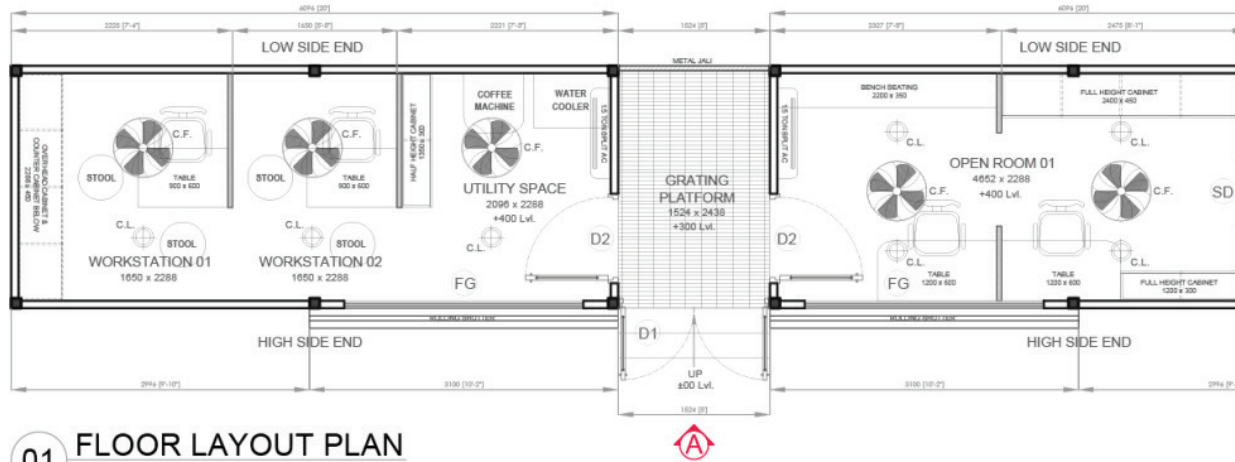


MOHALLA CLINIC



02 **ELEVATION AT VIEW A**
 PROTOTYPE: MOHALLA CLINIC
 MobiNest
 Scale - 1:25

MOHALLA CLINIC





OFFICES



INDOOR PLAY ROOM





As India surges forward to a smarter time and age, there is a need for newer, innovative and faster construction solutions that will fuel this momentum. Tata Steel Nest-In is an enabler in this growth through its wide range of steel-based prefabricated solutions for housing, sanitation, portable cabins and premium living.



Scan To Know More



Follow us on:

 www.nestin.co.in

 18002088200

